

A photograph of the Fort Worth skyline at night, featuring several illuminated skyscrapers against a dark blue sky. The text is overlaid on the left side of the image.

SINCE 1992

PMI Fort Worth

Fort Worth Chapter of the Project Management Institute

Annual Business Meeting

July 2022

AGENDA

- Meet and Greet
- Report on Fort Worth PMI Chapter - Rahila Vayani (30 min)
- PMI Roadmap - Judy Brennan (15 min)
- Q&A – (15 min)

Fort Worth Chapter

- Mission

- The Fort Worth Chapter of PMI uses a friendly and individualized approach to promote the growth of the project management profession and best practices through high-quality educational events and networking opportunities in the communities we serve.

- Vision

- The Fort Worth Chapter of PMI will be recognized as a vital and innovative leader in project management practices and a respected community contributor by promoting awareness, effectiveness and value to local practitioners and organizations.

Fort Worth PMI Board - 2022



Rahila Vayani PMP, CSM, MBA
CHAPTER PRESIDENT



Cindy Vandersleen, PMP
PAST PRESIDENT



Zach Valigura, PMP
VP – OPERATIONS

Fort Worth PMI Board - 2022



Hope Olsen, MPA, PMP

VP – EXTERNAL



YOUR NAME

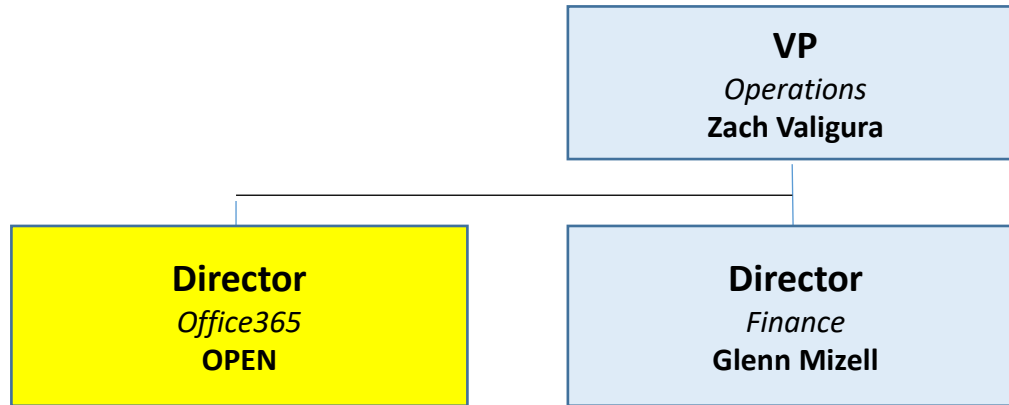
VP – PROFESSIONAL



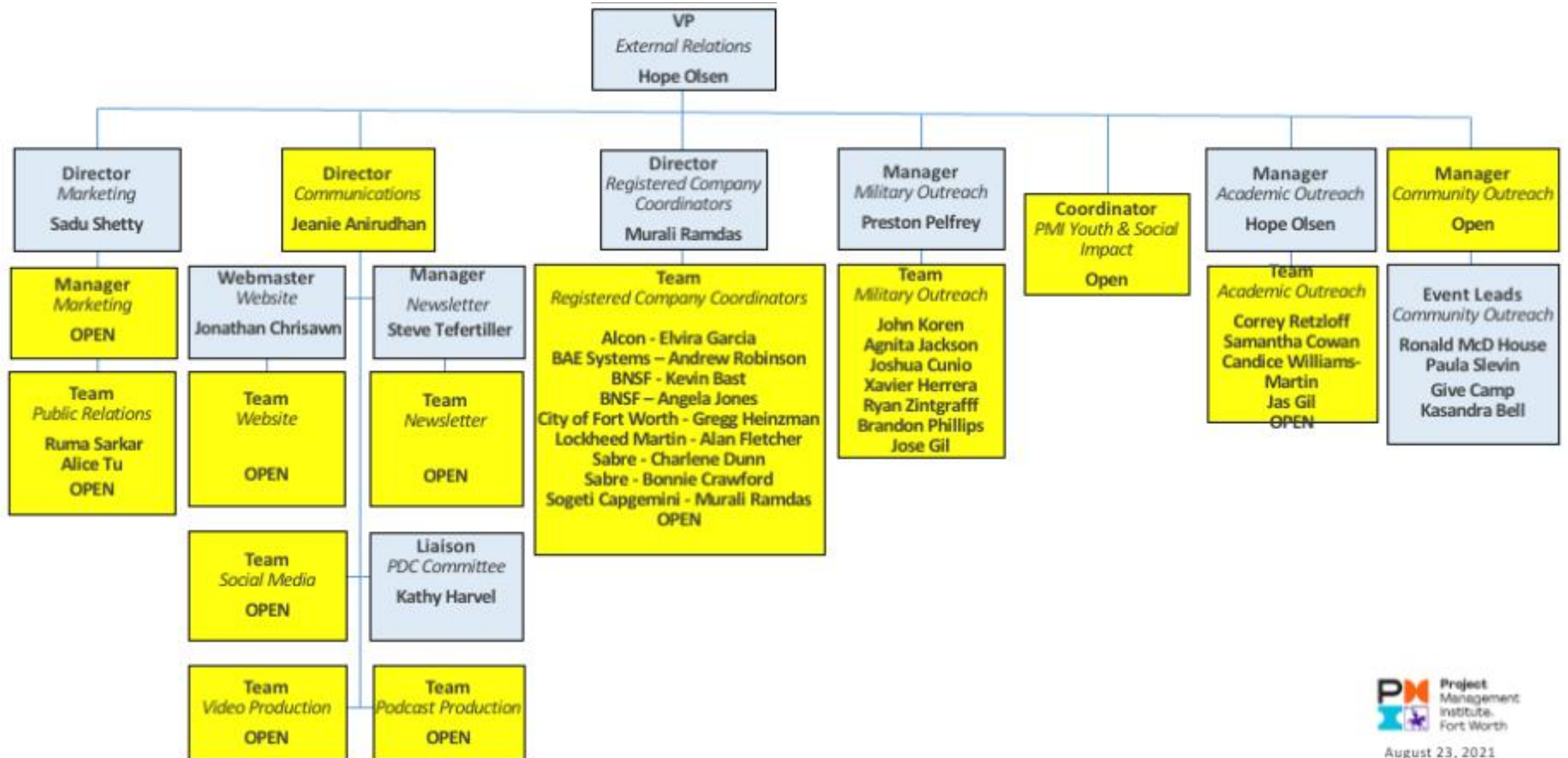
Samantha Fox, PMP

VP - Internal Relations

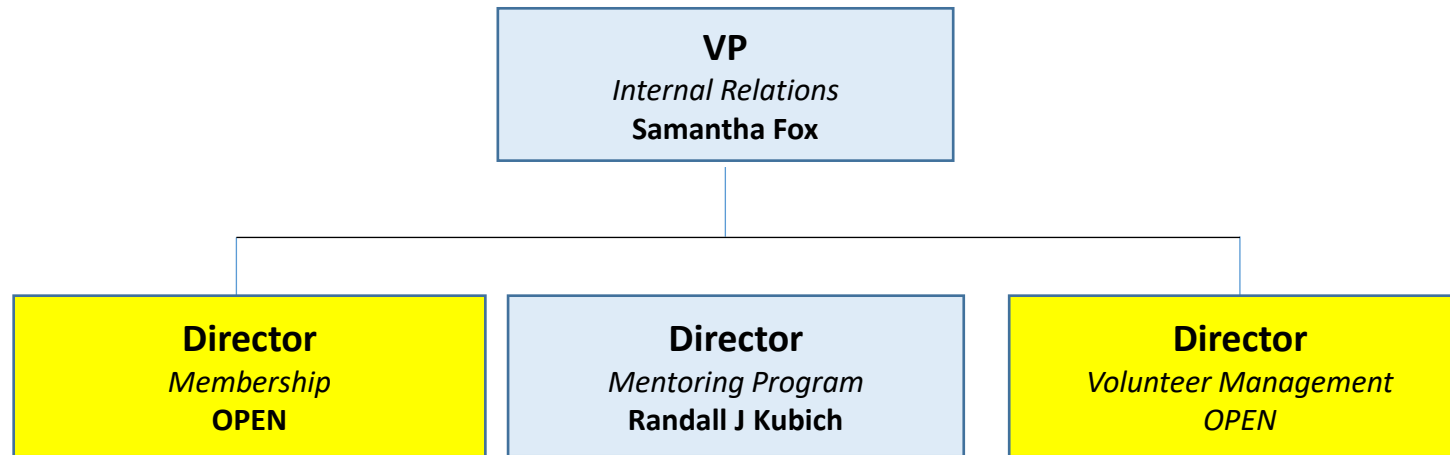
Fort Worth PMI Chapter Operations Team



Fort Worth PMI Chapter External Relations Team



Fort Worth PMI Chapter Internal Relations Team



Registered Company Coordinator (RCC) Program

Program Objective: To develop stronger relationships with local employers who promote and value project management as a critical competency within their business. To that end, this program strives to improve communications, coordination and recruitment of prospective chapter members.

Murali Ramdas, Director, RCC (rccprogram@fwpmi.org)

Alcon - Elvira Garcia

BAE Systems - Andrew Robinson

BNSF Railway - Kevin Bast and Angela Jones

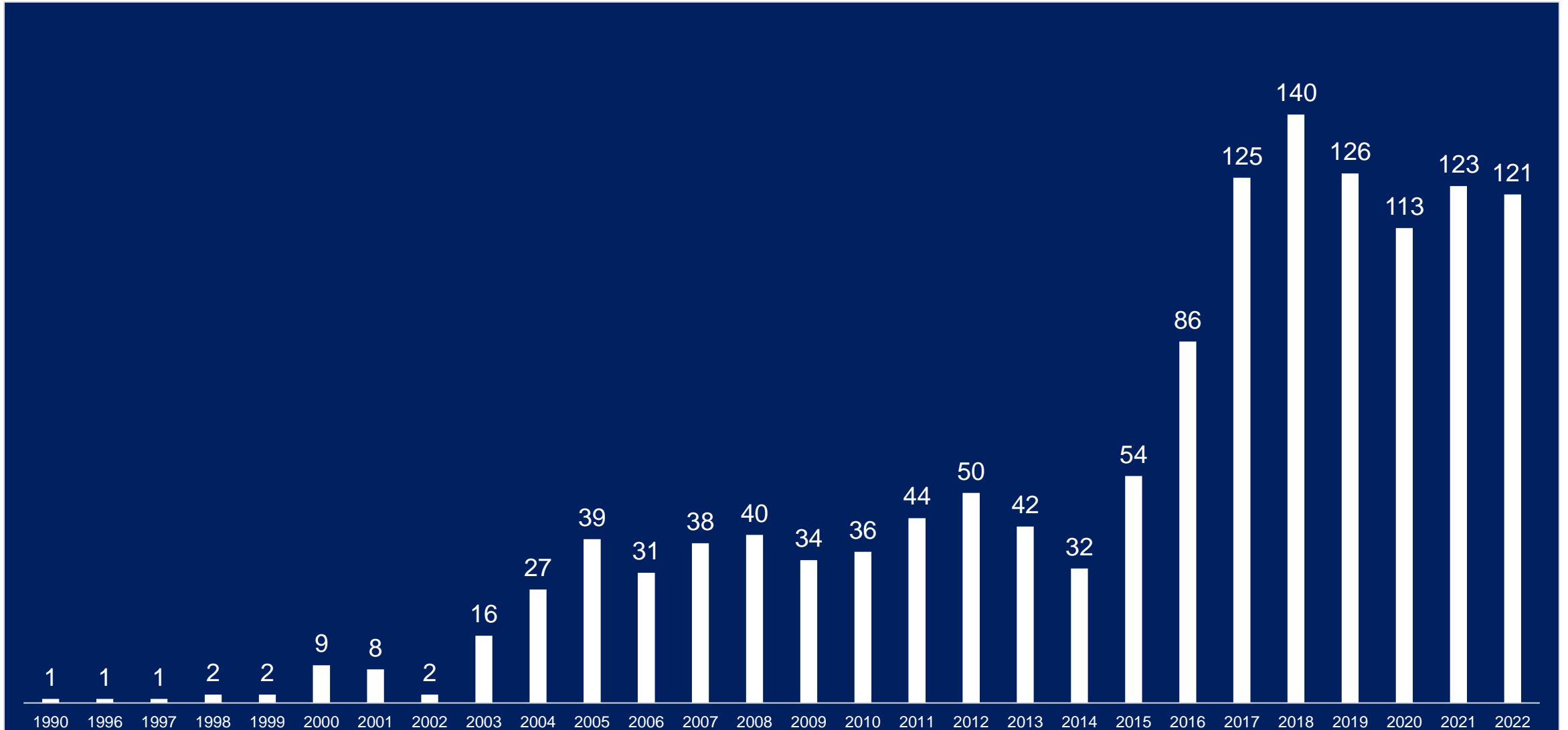
Capgemini Sogeti – Murali Ramdas

City of Fort Worth - Gregg Heinzman

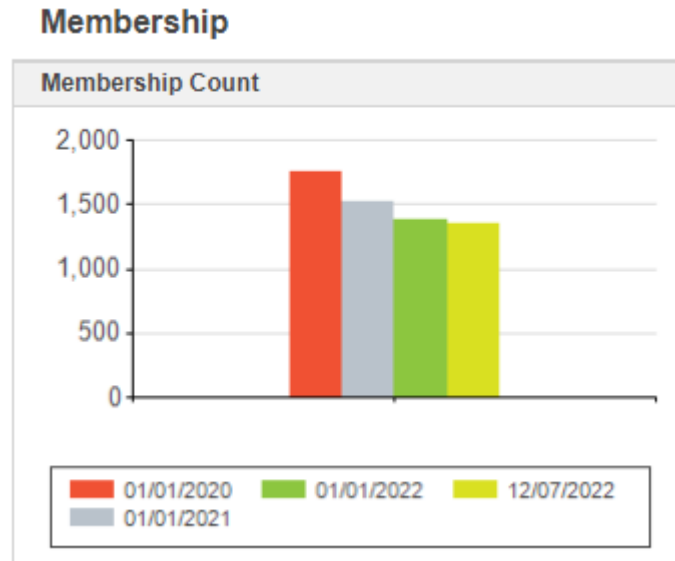
Lockheed Martin - Alan Fletcher

Sabre - Charlene Dunn and Bonnie Crawford

Chapter Growth – as of **07/02/2022** Active Membership = **1,343**

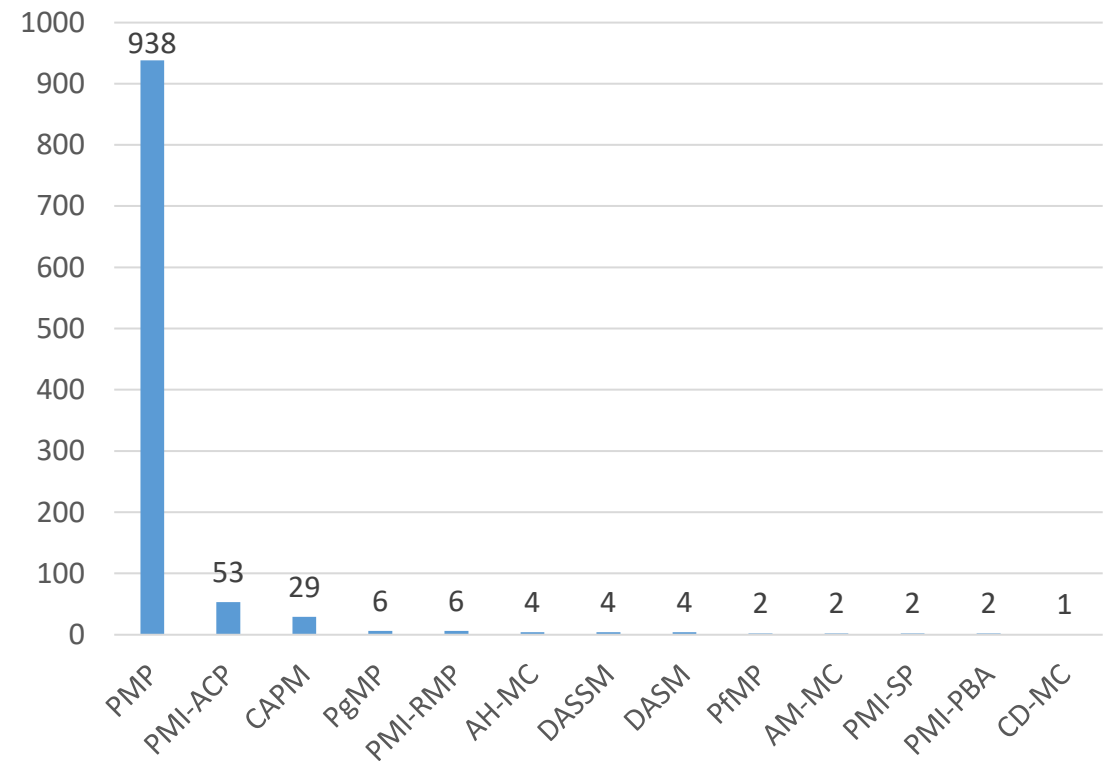


Key Metrics



Membership Credentials

Total Credential Count as of July 2nd, 2022, is **1,053**





Exceptional Service Recognition

- Glenn Mizell, Cindy Vandersleen, Amy Mizell
- 2022 PDC Team:

Denise Stafford, PDC Director

Glenn Mizell, Finance

Karolyn Knight, Speaker Management

Cindy Vandersleen, Registration

Lynn Robbins, Sponsorships

Kathy Harvel, Marketing/Communication

Lance Beaty, Volunteer Management

Sherry Sebastian, Hybrid Track Management

2021- The DARK Times.. But FWPMI survived!!!!

1. Robust MS TEAMS platform
2. Monthly Newsletters
3. Monthly Professional development newsletter
4. Award winning PDC
5. Banyan events
6. Toastmasters monthly
7. Book Clubs monthly
8. 9 Virtual Events
9. Superb Mentorship program
10. Banyan Learning Events
11. 2021 PMI Fort Worth Chapter Annual Professional Development Scholarship - \$2200
12. 100% uptime Website
13. 4 PODCASTs, MOVIE -Podcast with Karachi, Dallas and Puerto Rico chapter
14. SOCIAL MEDIA presence – Facebook, Linked In, Twitter
15. ONLINE Survey to gather member feedback
16. Partnered with Dallas Chapter on brand and land
17. Participated as judges in the Future Cities regional competition
18. Provided "Managing Life's Projects" training to Keller Boys Club (middle school kiddos)
19. Began a mentor program to Young Men's Leadership Academy to assist with Future Cities submission

2022

Mission: *Take care of our volunteers and service our members*



Professional Development

- ✓ Toastmaster
- ✓ Book Club
- ✓ PDC - Hybrid
- ✓ Virtual events – Feb, July
- ✓ Banyan Events
- Prof Dev NL – per avail

External Relations

- ✓ Newsletter
- ✓ Website
- Podcasts/YouTube – per avail
- Social Media – per avail
- Outreach Events – per avail

✓ Internal Relations, Ops & Others

- Volunteer Pipeline
- Volunteer Appreciation
- MS Teams/Financials
- Monthly Reporting
- Surveys

Volunteers

- Calendaring events
- Finding Speakers – Q4
- Planning Events
- Helping with virtual events – Greeting and validating
- Newsletter for Professional Dev
- Mentorship program
- Articles
- Pictures
- Part of Podcast and YouTube



Rahila

2023 Elections



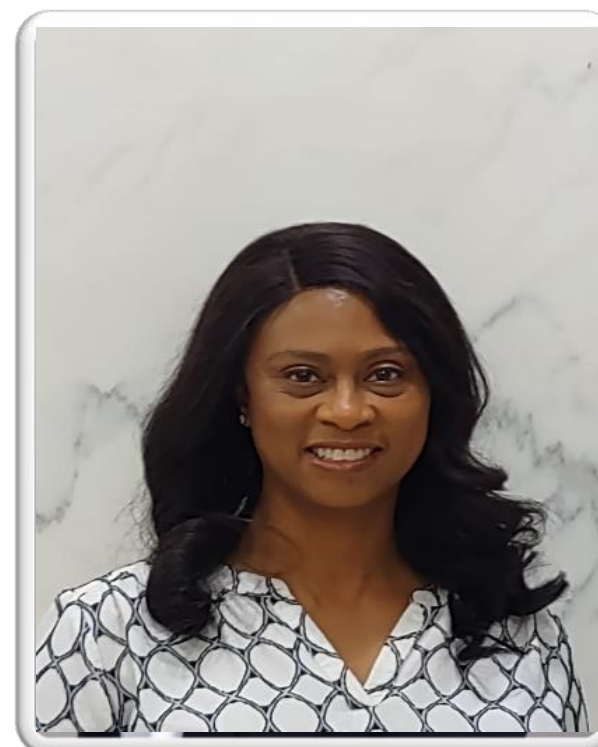
Kathy Harvel, MPA, PMP, CSM, CSPO

PRESIDENT 2023-20224



Samantha Fox, PMP

VP - Internal Relations



Dionne Beer, MS, PMP., CSM

VP – Professional Dev

Annual Financial Report

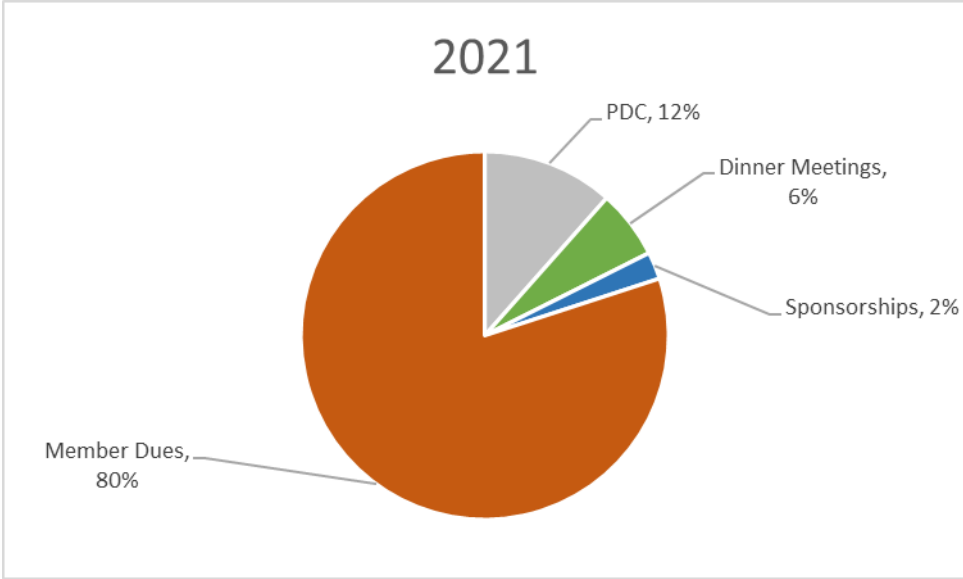
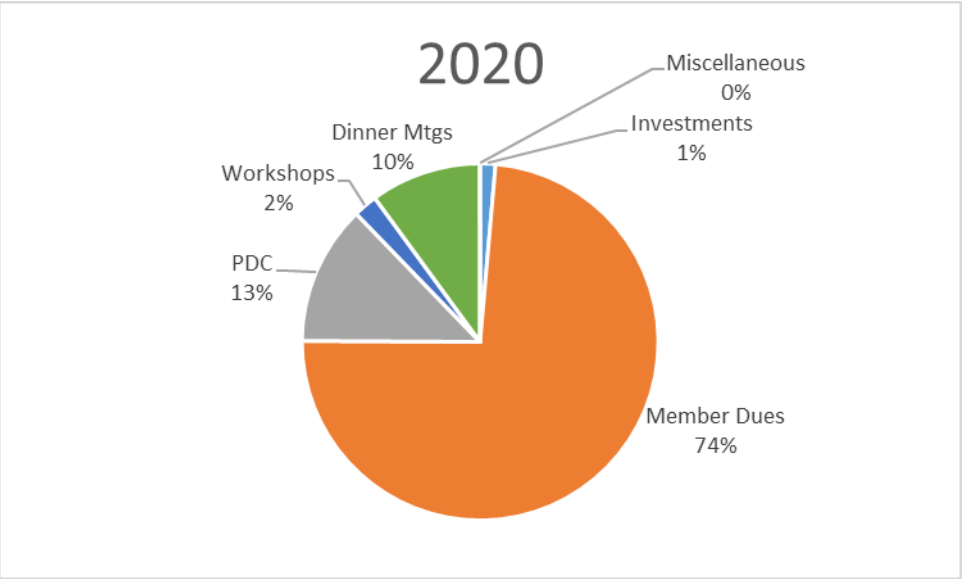
Reserves as of December 31, 2020:	\$249,401
2021 Incoming Funds (Gross Receipts)	\$41,795
2021 Expenses	\$45,431
Reserves as of December 2021:	\$245,765
Cash In Bank	
Wells Fargo - Checking	\$88,137
Wells Fargo - Savings	\$30,022
Ameriprise Investments	\$127,606
Total	\$245,765

Annual Financial Report continued

	2021	2020	Variance	Notes
TOTAL REVENUE (major categories)	\$41,795	\$52,295	(\$ 10,500)	Membership Dues and PDC make up over 99% of revenue for 2021. Total revenue for 2021 was 80% of amount rec'd in 2020.
Membership Dues	\$34,210	\$38,545	(\$ 4,335)	Membership Dues revenue for 2021 was 89% of amount rec'd in 2020.
Program Events (Virtual PDC, meetings)	\$ 7,552	\$13,024	(\$ 5,472)	Program Event revenue for 2021 was 58% of the amount rec'd in 2020
TOTAL EXPENSE	\$45,431	\$36,775	(\$ 8,656)	Far fewer in-person and smaller dinner meetings, PDC held virtually only for 2021, prepayments made for 2022 PDC, continued implemented new chapter website and Office 365, officer trainings held virtually. Total expenses for 2021 was 124% of the amount expensed in 2020, mostly due to technology.
Dinner Meetings	\$ 1,086	\$4,835	\$ 3,749	Meetings were either virtual or hybrid
PDC	\$18,772	\$2,843	(\$ 15,929)	Virtual PDC and prepayments for 2022 PDC
Volunteer Leadership Development	\$ 1,011	\$ 833	(\$ 178)	Virtual based training, volunteer recognition

Revenue Source

Due to the continuance of the Pandemic, membership dues constituted a much higher percentage of total revenue when compared to previous year as in-person events were severely limited.



Thank you for your support!

*The 2022 Annual Report will be available
on the Chapter website.*

www.FWPMI.org

